

Conservation Reserve Program

CP-25

Rare and Declining Habitat

Wildlife Habitat | Soil and Water Quality | Pollinator Habitat



Why Choose CRP? You Benefit. Land, Water and Wildlife Benefit.

Rare and Declining Habitat restores and protects critically endangered and threatened habitat and ecosystems. The Conservation Reserve Program (CRP) provides farmers and landowners with practices like this to achieve many farming and conservation goals. Whatever the conservation challenge - soil conservation, water quality protection or wildlife habitat enhancement - CRP is a proven land performance and management solution.

Why Rare and Declining Habitat Restoration?

Restoring rare and declining habitat such as tallgrass prairie, wet meadows, and sage steppe with appropriate native plant species helps increase vegetation diversity and provide vital habitat for declining wildlife species. These habitats offer nesting and escape cover, flowers for pollinators and a stable source of food for wildlife in a native ecosystem.

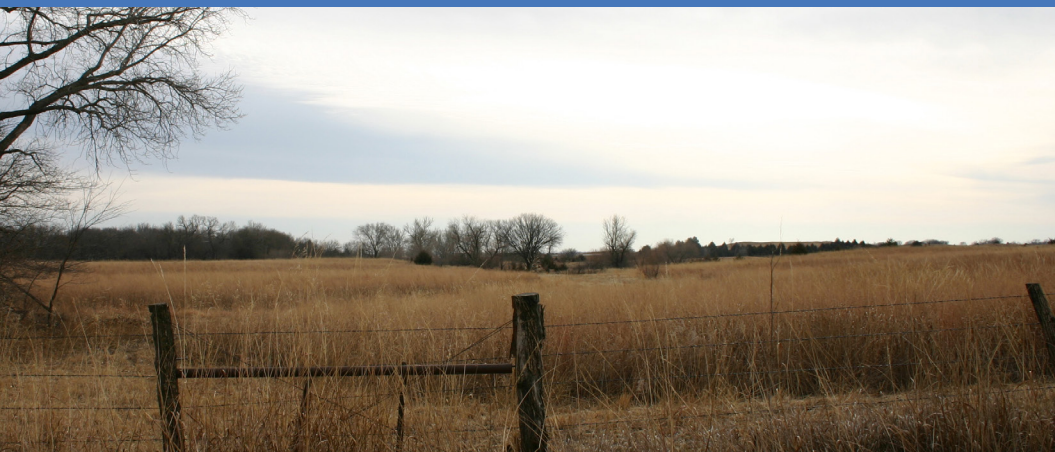
Offered in **general sign-up**, CP-25:

- Rehabilitates functions of endangered habitats
- Provides wildlife nesting and escape cover and is a resource for food
- Reduces soil erosion
- Supplies nutrition for pollinators

Financial Benefits

CP-25 participants are guaranteed:

- 10-15 years of annual rental payments
- Cost-Share payments covering up to 50% of the eligible costs of establishing the habitat restoration practice
- Mid-contract management Cost Share
- Additional incentives may be available in your state under the Conservation Reserve Enhancement Program (CREP)



Eligible Land

- Planted or considered planted 4 out of 6 years between 2008 and 2013
- Capable of being planted to an agricultural commodity
- Compliant with USDA's highly erodible land and wetland provisions

Practice Requirements

- Noxious weeds and other undesirable plants, insects and pests shall be controlled
- The practice will be maintained without additional cost-share payments

Owner/Operator Eligibility

Participants must:

- Have owned or operated the land for more than 12 months prior to program sign-up
- Be in control of the land for the length of the contract
- Meet USDA payment eligibility provisions

Obligations

Participants will:

- Not harvest or graze the practice area except under certain approved conditions
- Work with USDA-approved conservationist to develop a conservation plan
- Perform periodic management activities according to the conservation plan
- Complete seeding of the practice within 12 months of the effective date of the contract

Proven Conservation Benefits

- In prime habitat, a 4% increase in CRP vegetation is associated with a 22% increase in pheasant counts
- CRP reduced nutrient losses in FY 2014 by an estimated 542 million pounds of nitrogen and 108 million pounds of phosphorus
- In 2014, CRP lowered greenhouse gas emissions by the equivalent of 43 million metric tons of CO₂ - the same benefits as taking nearly 8 million cars off the road for a year

FSA will ultimately determine participant and land eligibility.

For More Information:

Contact your local USDA, Farm Service Agency:

<http://offices.usda.gov>