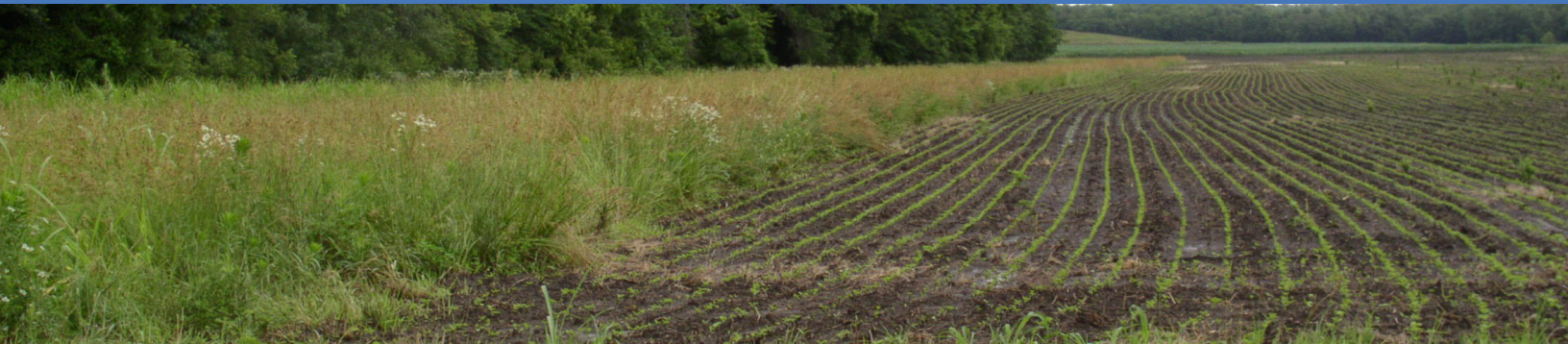


# Conservation Reserve Program

CP-33

## HABITAT BUFFERS FOR UPLAND BIRDS

Habitat Enhancement | Soil and Water Quality | Erosion Control



## Why Choose CRP? You Benefit. Land, Water and Wildlife Benefit.

Habitat buffers for upland birds provide critical cover, nesting and food resources to targeted upland species. The Conservation Reserve Program (CRP) provides farmers and landowners with practices like this to achieve many farming and conservation goals. Whatever the conservation challenge – soil conservation, water quality protection or wildlife habitat enhancement – CRP is a proven land performance and management solution.

## Why Upland Habitat Buffers?

Over the past two decades, field edges and hedgerows have been removed to create more cropland. These vegetative borders served as vital living and protective space for quail, pheasants and grassland birds – whose populations are declining. CP-33 establishes native grasses and legumes in 30 - 120 foot buffers around crop fields, giving bobwhite quail and other upland birds critical nesting and brood rearing habitat. Offered in **continuous sign-up**, CP-33:

- Provides a food source and cover for fragile upland species
- Reduces soil erosion and traps sediment
- Improves water quality by intercepting sediment and nutrients

## Financial Benefits

### CP-33 participants are guaranteed:

- 10 years of annual rental payments
- Payments covering up to 90% of the eligible costs of establishing the practice
  - 50% from a Cost-Share Payment and
  - 40% from a Practice Incentive Payment (PIP)
- Sign-up Incentive Payment (SIP) up to \$150/acre
- Mid-Contract Management Cost Share
- Additional incentives may be available in your state under the Conservation Reserve Enhancement Program (CREP)



## Eligible Land

- Planted or considered planted 4 out of 6 years between 2008 and 2013
- Capable of being planted to an agricultural commodity
- Located around field edges suitable for quail and upland birds
- Compliant with USDA's highly erodible land and wetland provisions

## Practice Requirements

- Noxious weeds and other undesirable plants, insects and pests should be controlled
- Practice shall be maintained without additional cost-share payments

## Owner/Operator Eligibility

Participants must:

- Have owned or operated the land for more than 12 months prior to program sign-up
- Be in control of the land for the length of the contract
- Meet USDA payment eligibility provisions

## Obligations

Participants will:

- Not harvest or graze the practice area except under certain approved conditions
- Work with USDA-approved conservationist to develop a conservation plan
- Perform periodic management activities according to the conservation plan
- Complete seeding of the practice within 12 months of the effective date of the contract

### Proven Conservation Benefits

- In prime habitat, a 4% increase in CRP vegetation is associated with a 22% increase in pheasant counts
- CRP reduced nutrient losses in FY 2013 by an estimated 565 million pounds of nitrogen and 113 million pounds of phosphorus
- In 2014, CRP lowered greenhouse gas emissions by the equivalent of 43 million metric tons of CO<sub>2</sub> – the same benefits as taking nearly 8 million cars off the road for a year

*FSA will ultimately determine participant and land eligibility.*

### For More Information:

Contact your local USDA, Farm Service Agency:

<http://offices.usda.gov>